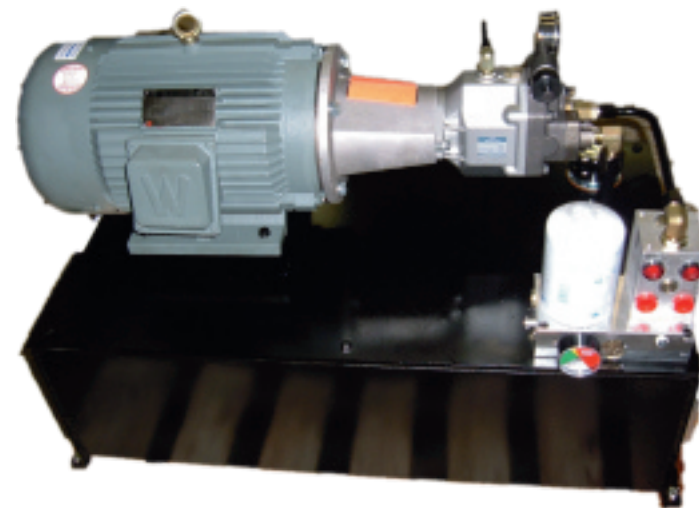
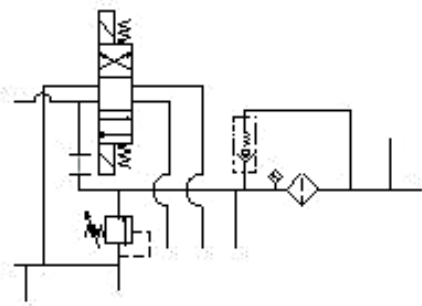


DC Hydraulics Power Units For Industrial Applications

Design Features:

- Fixed Displacement Gear Pumps .70-19.87 GPM with pressure balanced wear plates
- Variable Displacement, Pressure Compensated Piston Pumps with factory preset compensator or remote compensator. Maximum displacement 10.12 GPM.
- Pressures to 3000 PSI
- Motors from .5 - 20 HP
- Pump/Motor Adapters for NEMA 56C to 256TC Motors
- Reservoirs from 10 - 60 Gallons
- Pump/Motor shafts are joined by a flexible coupling to minimize noise, vibration, and alignment problems
- Removable cover for ease of servicing



DC Hydraulics
Corporate Headquarters:
42010 Koppnick Rd.
Suite 118
Canton, MI 48187
(734) 416-8999
Fax: (734) 416-8985

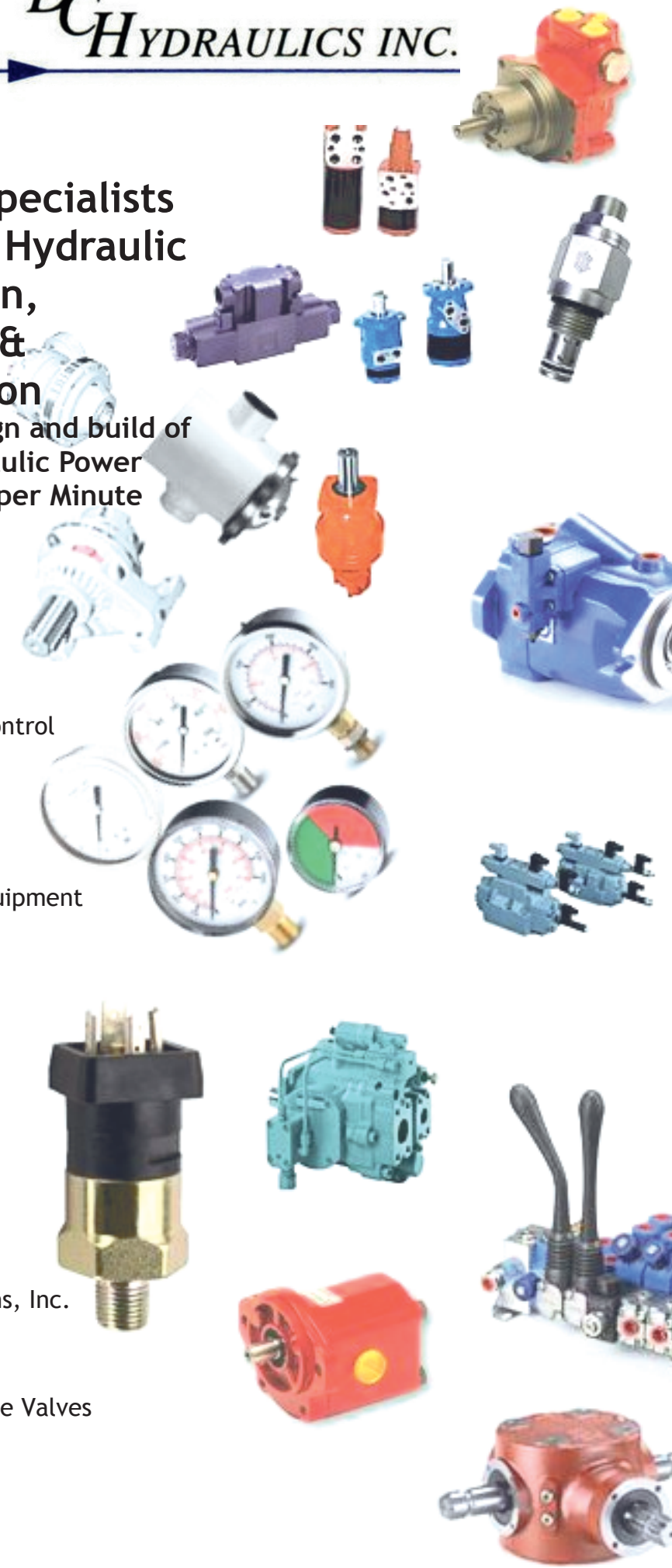
Minority Owned and Operated.



Fluid Power Specialists For Complete Hydraulic Systems Design, Components, & Instrumentation

Specializing in design and build of
A.C. and D.C. Hydraulic Power
Units to 20 Gallons per Minute

- . Bucher Hydraulics
- . Bondioli & Pavesi
- . Bosch Rexroth OilControl
- . Gems Sensors
- . RR USA, Inc.
- . Yuken Hydraulic Equipment
- . Vonberg Valve
- . Donaldson Filtration
- . Maradyne Corp.
- . Behringer Products
- . Geartek
- . PVS Sensors
- . Pressure Connections, Inc.
- . Nachi America, Inc.
- . Bucher Hyd Cartridge Valves
- . Magnaloy, Inc.



AC & DC Power Units
Air Operated Pumps
Check Valves
Ergonomic Equipment
Filler Breathers
Flow Controls
Flow Meters
Flow Sensors
Gear Pumps & Motors
Pressure Switches
Pressure Gauges
Pressure Sensors
Hand Pumps
Hydraulic Cylinders
Level Sensors
LSHT Motors
Manifolds
Manual Valves
Needle Valves
Piston Pumps
Piston Motors
Pressure Transducers
Sight Level Indicators
Spin-On Filters
Temperature Switches
Test Points
Solenoid Valves
Vane Pumps



42010 Koppernick Rd.
Suite 118
Canton, MI 48187
(734) 416-8999

Bucher Hydraulics DC Hydraulic Power Units for Lift Gates, Snow Plows, and Handicap Lifts available for 12, 24, 36, 48, and 72 Volts DC. Standard and Special Systems available. AC Hydraulic Power Units for Material Handling, Machine Tools, Work Holding available in flows from .25 GPM to 20 GPM Dyna-Lift & Intermediate Ergonomic height adjustable systems for work table, sewing machines, assembly equipment and anywhere you need to adjust the working height of a piece of equipment. Gear Pumps/Motors/Valves Gear pumps and motors in SAE AA, A, & B sizes in many different configurations. Multi pump arrangements, spool valves 1 to 7 sections manual and electric control with many port configurations
Bosch Rexroth OilControl Mechanical Cartridge Valves including pressure, flow and directional control ranging up to 79 GPM and higher Solenoid Operated Cartridge Valves including 2 way through 4 way control ranging to 40 GPM both AC and DC voltages Solenoid Operated Diverter Valves ranging in sizes up to 37 GPM 3 way to 6 way configurations in AC and DC voltages
Dynamic Fluid Components Gauges Pressure and Vacuum from 30" hg to 30,000 PSI stem, back, panel mounting, dry and liquid filled, 1.5", 2.0", 2.5" and 4.0" Dials, varying accuracies, dual scales, ABS plastic, stainless steel case and bezel, acrylic or safety glass windows. Valves Gauge protection valves, gauge snubbers, 2 and 3 way ball valves with pressures to 7,500 PSI Inline check valves with NPT and SAE connections. Needle and flow control valves in Steel and Stainless Steel construction. Test points and probes with hose assemblies to 9,000 PSI Hydraulic Gear Pumps & Accessories Pressure Balanced Gear pumps and motors to 4,000-PSI single and multi configurations. Displacements in SAE AA, A, and B 2 bolt mounts. Reservoir end covers, flanges, sight level temperature gauges.
Bucher Hydraulics Cartridge Valves Full line of 5,000 psi hydraulic cartridge valves including mechanical cartridges for flow controls, pressure, counterbalance, check, proportional and logic element along with directional control valves.
Behringer/Donaldson/Maradyne/Mahle/OMT Filtri Spin on filters, low, medium, and high-pressure filters with single or dual heads, in-tank filters and strainers. Hydraulic reservoir accessories & complete filter interchange to competing brands.
Peninsular Cylinder Co. NFPA and Metric Tie rod Pneumatic or Hydraulic low, medium, and high pressure (Heavy Duty) cylinders, Welded Cylinders, Standard Tie Rod Cylinders, Snow Plow Cylinders, Stainless Body Air Cylinders, Compact Air Cylinders, Mill and Mine Cylinders, Electronic Positioning Cylinders, Special Custom Cylinders to 8.0" Bores and 100"+ Strokes.
Settima/Geartek/Marzocchi/Honor Cast Iron and Aluminum Pressure Balanced Gear pumps and motors to 4,000-PSI single and multi pump configurations. .88 to 18.91 in ³ . SAE A, B, C, D 2 & 4 Bolt mounting Mobile & Industrial. Low Noise screw pumps in multiple configurations
Magnaloy Inc/LDI Industries Inc Fluid Power Accessories, Flexible drive couplings, Pump/Motor Mounts, Cylinder Rod Alignment couplers, Hydraulic manifolds and manifold accessories, hydraulic reservoirs, Multi-Passage Swivels, Specialty Fittings and Valves, Lubrication Equipment, Custom Fabrications and Reservoir Accessories.

Bondioli & Pavesi Axial Piston Pumps & Motors ranging from 14 cubic centimeter to 115 cubic centimeter for various off road and industrial applications. Gear Pumps & Motors .17 to 90 CC/Rev sizes in multiple sections, and various outputs. Heat Exchangers Air to oil aluminum heat exchangers in various sizes. Gearboxes Parallel shaft gear boxes in many ratios and sizes. Directional Control Valves both monoblock and sectional valves in manual and electric configurations with flows up to 35 GPM up to 10 sections.
Yuken/Nachi America Inc. Hydraulic Pumps Piston and vane style pumps ranging in size from .5 GPM to 70 GPM in pressure ranges up to 5800 PSI. Directional Controls D03, D05, D08, and D10 size manual and solenoid operated valves with pressure ranges to 4500 PSI. Modular Valves D03 through D10 sandwich type modular valves in flow and pressure configurations. Flow/Pressure Controls Flow and pressure control valves manifold and inline mounted to flows of 100 GPM and pressures of 5000 PSI. Proportional Electro-Hydraulic Controls Directional, flow and pressure proportional valves rated to 100 GPM and 3500 PSI.
Gems Sensors/PVS Sensors Liquid Level Sensors available in float type, single and multiple point indication, conductance type, electro-optic type, ultrasonic, and diptape/drumtape types. Suresite continuous visual and electronic level indication. Flow Sensors available in piston, electronic, paddle, and shuttle types. Pressure Sensors styles include piston and diaphragm switches and high-performance transducers including sputtered or thin film technology. Warrick Conductivity Controls including switches, intrinsically safe and non-intrinsically safe relays and controls, and electrical panels. Pressure, Temperature, Vacuum, and Differential switches for many applications
RR USA, Inc. Several different mobile based products including: LSHT Hydraulic motors and valves, hydraulic steering units, slewing bearings, steering columns, braking systems, steering wheels, seats, planetary gear reducers, and wheel drives.
Best Metal Products Custom manufacturer of cylinders for the OEM market. Capable of providing customers with a variety of designs. 1" to 6" Bore. Low, Medium and High Pressure designs Various Mounting Configurations, Various Port Choices and Integrated Valve Designs. Materials of Construction are Chrome Plated, Nitrosteel, & Stainless Rods, Steel Tube Construction.
Vonberg Valve Hydraulic valves In-Line and Cartridge style consisting of flow regulating valves, Directional valves, velocity fuses, flow limiters, and pressure controls. Integrated manifolds utilizing our own as well as competing cartridge products.
Thermal Transfer Manufacturer of oil coolers and specialty heat exchangers serving a variety of industrial market segments.
Pressure Connections, Inc. Complete source for rubber, thermoplastic and PTFE hose, adapters, a wide range of fittings, metric tubing and metric, BSP and JIS fluid connectors and all the tools you need for fluid control and hydraulic applications.
Daman, Inc./Hedland, Inc. Manifolds, Subplates, Flow Meters and Switches.

